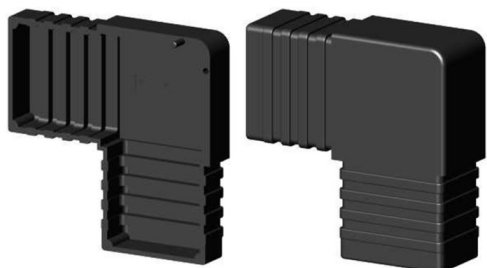


90° Elbow (2 axes, 2 slots) - for tube 60x40x2 mm - black



link to the product:

<https://tubefittings.eu/en/plastic-connectors-for-rectangular-profiles/5104-90-elbow-2-axes-2-slots-for-tube-60x40x2-mm-black-5901421017224.html>

Price: **€7.00** gross

Manufacturer: Klemp

Referention number: 2D2-V60X40-X2-C

Information:

Elbow Joint (2 axes, 2 sockets) for 60x40x2 mm tube is a durable connector for frames, cages, and lightweight aluminum structures. Polyamide PA6 reinforced with glass fiber ensures durability, and push-fit installation with a rubber mallet is quick and convenient. The black color adds to the aesthetics. Standard plastic connectors guarantee stable and precise joints. Ideal for industrial and hobbyist applications.

The size of the discount

| Quantity | Discount | Spare |
|----------|----------|-----------------|
| 10 | 2% | above €1.40 |
| 20 | 5% | above €7.00 |
| 50 | 10% | above €35.00 |
| 100 | 15% | above €105.00 |
| 500 | 20% | above €700.00 |
| 1000 | 30% | above €2,100.00 |

Product features

| | |
|------------------|--|
| Material | Polyamide PA6 - glass fiber reinforced |
| Colour | Black |
| Type | Elbow |
| Mounting method | By plug, using a rubber hammer |
| Matching profile | 60x40x2 mm |
| Number of axes | 2 |
| Number of slots | 2 |
| Core | Standard plastic connectors |