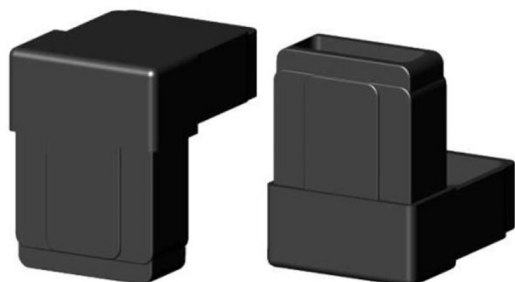


90° Elbow (2 axes, 2 slots) - for tube 50x30x2 mm - black



link to the product:

<https://tubefittings.eu/en/plastic-connectors-for-rectangular-profiles/5107-90-elbow-2-axes-2-slots-for-tube-50x30x2-mm-black-5901421017255.html>

Price: **€2.00** gross

Manufacturer: Klemp

Referention number: 2D2-V50X30-X2-C

Information:

Elbow joint (2 axes, 2 sockets) for 50x30x2 mm tube is a durable connector for frameworks, frames, and lightweight aluminum structures. Polyamide PA6 reinforced with glass fiber ensures longevity, and installation by press-fitting with a rubber mallet is quick and easy. Standard plastic connectors guarantee stable and precise joints. The black color suits modern designs. Perfect for industrial and hobbyist constructions.

The size of the discount

| Quantity | Discount | Spare |
|----------|----------|---------------|
| 10 | 2% | above €0.40 |
| 20 | 5% | above €2.00 |
| 50 | 10% | above €10.00 |
| 100 | 15% | above €30.00 |
| 500 | 20% | above €200.00 |
| 1000 | 30% | above €600.00 |

Product features

| | |
|------------------|--|
| Material | Polyamide PA6 - glass fiber reinforced |
| Colour | Black |
| Type | Elbow |
| Mounting method | By plug, using a rubber hammer |
| Matching profile | 50x30x2 mm |
| Number of axes | 2 |
| Number of slots | 2 |
| Core | Standard plastic connectors |